

Metallserie Msv.



**Gerade Einschraubverschraubung,
zylindrisch (mit O-Ring)**

Art.-Nr.	ØD	G	VE	Preis in Euro kompl.Messing
KT2000M	4	M5	10	1,39
KT2001M	4	G1/8	10	1,39
KT2002M	4	G1/4	10	1,63
KT2003M	6	M5	10	1,43
KT2004M	6	G1/8	10	1,39
KT2005M	6	G1/4	10	1,51
KT2006M	6	G3/8	10	2,59
KT2007M	8	G1/8	10	1,47
KT2008M	8	G1/4	10	1,55
KT2009M	8	G3/8	10	2,07
KT2010M	8	G1/2	10	3,43
KT2011M	10	G1/8	10	2,63
KT2012M	10	G1/4	10	2,03
KT2013M	10	G3/8	10	2,27
KT2014M	10	G1/2	10	3,59
KT2015M	12	G1/4	10	2,87
KT2016M	12	G3/8	10	3,11
KT2017M	12	G1/2	10	3,39
KT2018M	14	G3/8	10	5,34
KT2019M	14	G1/2	10	5,50



**Winkel-Einschraubanschluss,
drehbar, zylindrisch (mit O-Ring)**

Art.-Nr.	ØD	G	VE	Preis in Euro kompl.Messing
KT2020M	4	M5	10	2,75
KT2021M	4	G1/8	10	2,55
KT2022M	4	G1/4	10	3,11
KT2023M	6	M5	10	2,83
KT2024M	6	G1/8	10	2,55
KT2025M	6	G1/4	10	2,79
KT2026M	8	G1/8	10	2,91
KT2027M	8	G1/4	10	3,19
KT2028M	8	G3/8	10	3,94
KT2029M	10	G1/4	10	3,87
KT2030M	10	G3/8	10	4,30
KT2031M	10	G1/2	10	6,26
KT2032M	12	G1/4	10	5,46
KT2033M	12	G3/8	10	5,66
KT2034M	12	G1/2	10	6,46
KT2035M	14	G3/8	10	8,05
KT2036M	14	G1/2	10	8,65



**Winkel-Einschraubanschluss, drehbar,
lang, zylindrisch (mit O-Ring)**

Art.-Nr.	ØD	G	VE	Preis in Euro kompl.Messing
KT2037M	4	M5	10	3,59
KT2038M	4	G1/8	10	3,67
KT2039M	4	G1/4	10	4,18
KT2040M	6	M5	10	3,59
KT2041M	6	G1/8	10	3,59
KT2042M	6	G1/4	10	4,30
KT2043M	8	G1/8	10	4,10
KT2044M	8	G1/4	10	4,58
KT2045M	8	G3/8	10	6,30
KT2046M	10	G1/4	10	6,42
KT2047M	10	G3/8	10	7,13



**Winkel-Schwenkverschraubung, zylindrisch
(mit O-Ring)**

Art.-Nr.	ØD	G	VE	Preis in Euro kompl.Messing
KT2048M	4	M5	10	3,19
KT2049M	4	G1/8	10	3,79
KT2050M	6	M5	10	3,98
KT2051M	6	G1/8	10	3,43
KT2052M	6	G1/4	10	4,22
KT2053M	8	G1/8	10	3,71
KT2054M	8	G1/4	10	4,22
KT2055M	8	G3/8	10	5,86
KT2056M	10	G1/4	10	4,78
KT2057M	10	G3/8	10	6,10
KT2058M	12	G1/4	10	6,57
KT2059M	12	G3/8	10	6,93



Einschraubanschluss,
zylindrisch (mit O-Ring)



T-Steckverbindung

Art-Nr.	ØD	G	VE	Preis in Euro kompl.Messing
KT2060M	4	G1/8	10	3,79
KT2061M	4	G1/4	10	5,10
KT2062M	6	G1/8	10	3,79
KT2063M	6	G1/4	10	4,22
KT2064M	8	G1/8	10	4,50
KT2065M	8	G1/4	10	4,62
KT2066M	8	G3/8	10	5,66
KT2067M	10	G1/4	10	6,06
KT2068M	10	G3/8	10	6,50
KT2069M	12	G1/4	10	8,89
KT2070M	12	G3/8	10	9,05
KT2071M	14	G1/2	10	10,56

Art-Nr.	ØD1	ØD2	VE	Preis in Euro kompl.Messing
KT2072M	4	4	10	3,15
KT2073M	6	6	10	3,39
KT2074M	8	8	10	3,98
KT2075M	10	10	10	5,30
KT2076M	12	12	10	7,49
KT2077M	14	14	10	10,08
KT2078M	2x 6	4	10	3,67
KT2079M	2x 8	6	10	4,06
KT2080M	2x 10	8	10	5,50



Gerade Steckverbindung



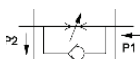
Winkel-Steckverbindung

Art-Nr.	ØD1	ØD2	VE	Preis in Euro kompl.Messing
KT2081M	4	4	10	2,43
KT2082M	6	6	10	2,47
KT2083M	8	8	10	2,71
KT2084M	10	10	10	3,79
KT2085M	12	12	10	5,30
KT2086M	14	14	10	7,29
KT2087M	6	4	10	3,07
KT2088M	8	6	10	3,35
KT2089M	10	8	10	4,06
KT2090M	12	10	10	6,18
KT2091M	14	12	10	7,73

Art-Nr.	ØD	VE	Preis in Euro kompl.Messing
KT2092M	4	10	2,35
KT2093M	6	10	2,63
KT2094M	8	10	2,87
KT2095M	10	10	3,71
KT2096M	12	10	5,70
KT2097M	14	10	7,37



Einschraub-Drosselrückschlagventil mit
Rändelknopf Typ A Zuluftdrosselung



Einschraub-Drosselrückschlagventil mit
Rändelknopf Typ B Abluftdrosselung



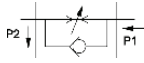
Art-Nr.	Schlauch		NI/min*	VE	Preis in Euro kompl.Messing
	ØD 1	G 2			
KT2098M	4	G1/8	310	10	12,35
KT2099M	6	G1/8	390	10	12,35
KT2100M	8	G1/8	390	10	12,35
KT2101M	6	G1/4	710	10	13,39
KT2102M	8	G1/4	810	10	13,39
KT2103M	10	G1/4	810	10	14,23

Art-Nr.	Schlauch		NI/min*	VE	Preis in Euro kompl.Messing
	ØD 2	G 1			
KT2104M	4	G1/8	310	10	12,35
KT2105M	6	G1/8	390	10	12,35
KT2106M	8	G1/8	390	10	12,35
KT2107M	6	G1/4	710	10	13,39
KT2108M	8	G1/4	810	10	13,39
KT2109M	10	G1/4	810	10	14,23
KT2110M	12	G1/4	810	10	14,66

* Ermittlung der Durchflusswerte bei durchschnittlich 6bar



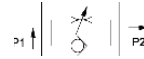
Einschraub-Drosselrückschlagventil, kurze Bauform mit Schlitz Typ A Zuluftdrosselung



Art-Nr.	ØD 1	G 2	NI/min*	VE	Preis in Euro kmp.l.Messing
KT2111M	4	G1/8	310	10	10,72
KT2112M	6	G1/8	390	10	10,72
KT2113M	6	G1/4	710	10	11,76
KT2114M	8	G1/8	390	10	10,72
KT2115M	8	G1/4	810	10	11,76
KT2116M	10	G1/4	810	10	12,19
KT2117M	12	G1/4	810	10	12,35



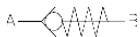
Einschraub-Drosselrückschlagventil, kurze Bauform mit Schlitz Typ B Abluftdrosselung



Art-Nr.	Schlauch		NI/min*	VE	Preis in Euro kmp.l.Messing
	ØD 2	G 1			
KT2118M	4	G1/8	310	10	10,72
KT2119M	6	G1/8	390	10	10,72
KT2120M	6	G1/4	710	10	11,76
KT2121M	8	G1/8	390	10	10,72
KT2122M	8	G1/4	810	10	11,76
KT2123M	10	G1/4	810	10	12,19
KT2124M	12	G1/4	810	10	12,35



Rückschlagventil – Messing vernickelt Sechskant



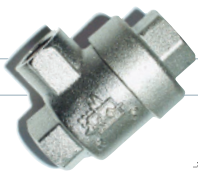
Art-Nr.	G	NI/min*	VE	Preis in EUR
KT2125	G1/8	920	1	6,16
KT2126	G1/4	1600	1	7,28
KT2127	G3/8	2430	1	14,74
KT2128	G1/2	3500	1	17,03



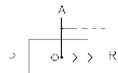
Drosselrückschlagventil Blockbauform



Art-Nr.	G	NI/min*	VE	Preis in EUR
KT2130	M5	250	1	12,14
KT2131	G1/8	450	1	12,50
KT2132	G1/4	600	1	13,48
KT2133	G3/8	1100	1	31,52
KT2134	G1/2	1400	1	34,41

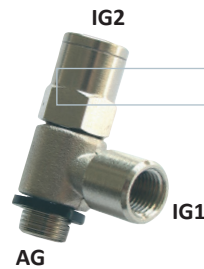


Schnellentlüftungsventil



P-A A-R

Art.Nr.	G	NI/min*	NI/min*	VE	Preis in EUR
KT2135	M5	220	300	1	6,52
KT2136	G1/8	680	1100	1	6,45
KT2137	G1/4	1200	2100	1	9,31
KT2138	G3/8	2300	4900	1	12,50
KT2139	G1/2	3400	6100	1	17,21
KT2140	G3/4	3200	8750	1	24,63
KT2141	G1	2900	10750	1	179,31



Entsperrbares Rückschlagventil

AG

IG1

IG2

Art.Nr.	AG	IG1	IG2	VE	Preis in EUR
KT2400	1/8"	1/8"	M5	1	34,97
KT2380	1/4"	1/4"	M5	1	38,36
KT2360	3/8"	3/8"	1/8"	1	47,48
KT2401	1/2"	1/2"	1/8"	1	57,54

* Ermittlung der Durchflusswerte bei durchschnittlich 6bar

Fittings Msv.



Doppelnippel zylindrisch

Art.-Nr.	G1	G2	VE	Preis in EUR
KT2142	M5	M5	10	0,43
KT2143	M5	G1/8	10	0,65
KT2144	G1/8	G1/8	10	0,68
KT2145	G1/8	G1/4	10	1,08
KT2146	G1/8	G3/8	10	1,23
KT2147	G1/4	G1/4	10	1,12
KT2148	G1/4	G3/8	10	1,37
KT2149	G1/4	G1/2	10	2,09
KT2150	G3/8	G3/8	10	1,51
KT2151	G3/8	G1/2	10	2,20
KT2152	G1/2	G1/2	10	2,49



Doppelnippel konisch

Art.-Nr.	R1	R2	VE	Preis in EUR
KT2153	R1/8	R1/8	10	0,65
KT2154	R1/8	R1/4	10	0,94
KT2155	R1/8	R3/8	10	1,30
KT2156	R1/8	R1/2	10	2,34
KT2157	R1/4	R1/4	10	0,97
KT2158	R1/4	R3/8	10	1,30
KT2159	R1/4	R1/2	10	2,14
KT2160	R3/8	R3/8	10	1,37
KT2161	R3/8	R1/2	10	2,21
KT2162	R1/2	R1/2	10	2,24
KT2163	R1/2	R3/4	10	3,78
KT2164	R3/4	R3/4	10	3,85
KT2165	R3/4	R1	10	6,63
KT2166	R1	R1	10	7,50



Doppelnippel teilbar (3-teilig)

Art.-Nr.	R1	R2	VE	Preis in EUR
KT2266	R1/8	R1/8	10	1,96
KT2267	R1/4	R1/4	10	2,40
KT2268	R3/8	R3/8	10	3,71
KT2269	R1/2	R1/2	10	5,11
KT2270	R1/8	R1/4	10	3,68
KT2271	R1/4	R3/8	10	5,15



IG

Reduzierung zylindrisch

AG

Art.-Nr.	IG	AG	VE	Preis in EUR
KT2167	M5	G1/8	10	0,58
KT2168	G1/8	G1/4	10	0,72
KT2169	G1/8	G3/8	10	1,08
KT2170	G1/4	G3/8	10	0,94
KT2171	G1/8	G1/2	10	1,98
KT2172	G1/4	G1/2	10	1,75
KT2173	G3/8	G1/2	10	1,55
KT2174	G3/8	G3/4	10	3,32
KT2175	G1/2	G3/4	10	2,96



IG

Reduziermuffe zylindrisch

AG

Art.-Nr.	IG	AG	VE	Preis in EUR
KT2176	G1/8	M5	10	0,68
KT2177	G1/8	G1/8	10	0,72
KT2178	G1/4	G1/8	10	1,01
KT2179	G3/8	G1/8	10	1,69
KT2180	G1/4	G1/4	10	1,15
KT2181	G3/8	G1/4	10	1,77
KT2182	G1/2	G1/4	10	2,27
KT2183	G3/8	G3/8	10	1,80
KT2184	G1/2	G3/8	10	2,49
KT2185	G1/2	G1/2	10	3,35
KT2186	G3/4	G1/2	10	5,34
KT2187	G1	G3/4	10	9,28



Muffe

Art.-Nr.	G	VE	Preis in EUR
KT2272	M5	10	0,56
KT2273	G1/8	10	0,88
KT2274	G1/4	10	1,37
KT2275	G3/8	10	2,00
KT2276	G1/2	10	3,19
KT2277	G1	10	15,26



Winkelstück mit Innengewinde

Art.-Nr.	G	VE	Preis in EUR
KT2188	G1/8	10	1,41
KT2189	G1/4	10	2,45
KT2190	G3/8	10	3,15
KT2191	G1/2	10	5,30
KT2192	G3/4	10	7,32
KT2193	G1	10	11,82



Winkel-Einschraubstück

Art.-Nr.	R	G	VE	Preis in EUR
KT2194	M5	M5	10	1,08
KT2195	R1/4	G1/8	10	1,51
KT2196	R1/8	G1/8	10	1,23
KT2197	R1/4	G1/4	10	2,05
KT2198	R3/8	G3/8	10	2,92
KT2199	R1/2	G1/2	10	4,58
KT2200	R3/4	G3/4	10	6,71
KT2201	R1	R1	10	10,96



Winkelstück mit Außengewinde, konisch

Art.Nr.	R1	R2	VE	Preis in EUR
KT2208	R1/8	R1/8	10	1,08
KT2209	R1/4	R1/8	10	1,23
KT2210	R1/4	R1/4	10	1,69
KT2211	R3/8	R3/8	10	2,63
KT2212	R1/2	R1/2	10	4,43
KT2213	R3/4	R3/4	10	6,16
KT2214	R1	-	5	10,02



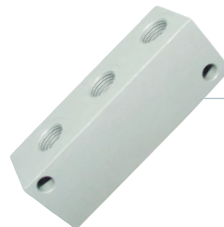
T-Stück mit Innengewinde

Art.-Nr.	G	VE	Preis in EUR
KT2202	G1/8	10	1,91
KT2203	G1/4	10	2,98
KT2204	G3/8	10	4,13
KT2205	G1/2	10	6,93
KT2206	G3/4	10	9,45
KT2207	G1	10	16,10



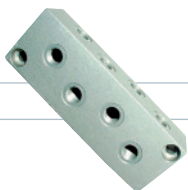
Y-Einschraubstück

Art.-Nr.	R	G	VE	Preis in EUR
KT2215	R1/8	G1/8	10	1,69
KT2216	R1/4	G1/4	10	2,67
KT2217	R3/8	G3/8	10	3,64
KT2218	R1/2	G1/2	10	6,56



Verteilerleiste 3-fach

Art.-Nr.	G	VE	Preis in EUR
KT2219	M5	1	8,72
KT2220	G1/8	1	10,71
KT2221	G1/4	1	15,73
KT2222	G3/8	1	26,44
KT2223	G1/2	1	26,16



Verteilerleiste 8-fach

Art.Nr.	G	G1	VE	Preis in EUR
KT2224	G1/4	8x M5	1	31,42
KT2225	G3/8	8x G1/8	1	37,15
KT2226	G1/2	8x G1/4	1	45,39



Stopfen mit O-Ring

Art.-Nr.	G	VE	Preis in EUR
KT2227	M5	10	0,54
KT2228	G1/8	10	0,58
KT2229	G1/4	10	0,83
KT2230	G3/8	10	1,08
KT2231	G1/2	10	1,77



Stopfen ohne Bund

Art.-Nr.	R	VE	Preis in EUR
KT2232	R1/8	10	0,39
KT2233	R1/4	10	0,63
KT2234	R3/8	10	0,91
KT2235	R1/2	10	1,44



Schlauchtülle

Art.-Nr.	LW	G	VE	Preis in EUR
KT2236	6	G1/4	10	1,89
KT2237	9	G1/4	10	1,89
KT2238	10	G1/4	10	1,89
KT2239	13	G1/4	10	1,89
KT2240	6	G3/8	10	2,21
KT2241	9	G3/8	10	2,21
KT2242	13	G3/8	10	2,21
KT2243	6	G1/2	5	2,70
KT2244	9	G1/2	5	2,70
KT2245	13	G1/2	5	3,08
KT2246	19	G1/2	5	3,29
KT2247	19	G3/4	5	5,64



Schalldämpfer

Art.-Nr.	G	VE	Preis in EUR
KT2248	G1/8	10	0,86
KT2249	G1/4	10	1,47
KT2250	G3/8	10	3,43
KT2251	G1/2	10	6,86



Art.-Nr.	G	VE	Preis in EUR
KT2258	M5	10	1,21
KT2252	G1/8	10	1,16
KT2253	G1/4	10	1,72
KT2254	G3/8	10	3,60
KT2255	G1/2	10	5,55
KT2256	G3/4	10	11,61
KT2257	G1	5	20,95



Schalldämpfer flach

Art.-Nr.	G	VE	Preis in EUR
KT2265	M5	10	0,91
KT2259	G1/8	10	0,79
KT2260	G1/4	10	1,16
KT2261	G3/8	10	2,17
KT2262	G1/2	10	3,23
KT2263	G3/4	10	5,50
KT2264	G1	10	9,27

Übersicht Dichtungen

PVC-hart Art.-Nr.	für Gewinde	VE	Preis in Euro
KT2278	M5	100	0,11
KT2279	G1/8	100	0,14
KT2280	G1/4	100	0,22
KT2281	G3/8	100	0,22
KT2282	G1/2	100	0,25
KT2283	G3/4	100	0,29
KT2284	G1	100	0,47

Aluminium Art.-Nr.	für Gewinde	VE	Preis in Euro
KT2291	M5	100	0,11
KT2292	G1/8	100	0,11
KT2293	G1/4	100	0,11
KT2294	G3/8	100	0,21
KT2295	G1/2	100	0,25
KT2296	G3/4	100	0,49
KT2297	G1	100	0,53

PVC-unverlierbar Art.-Nr.	für Gewinde	VE	Preis in Euro
KT2285	M5	100	0,25
KT2286	G1/8	100	0,25
KT2287	G1/4	100	0,32
KT2288	G3/8	100	0,32
KT2289	G1/2	100	0,35